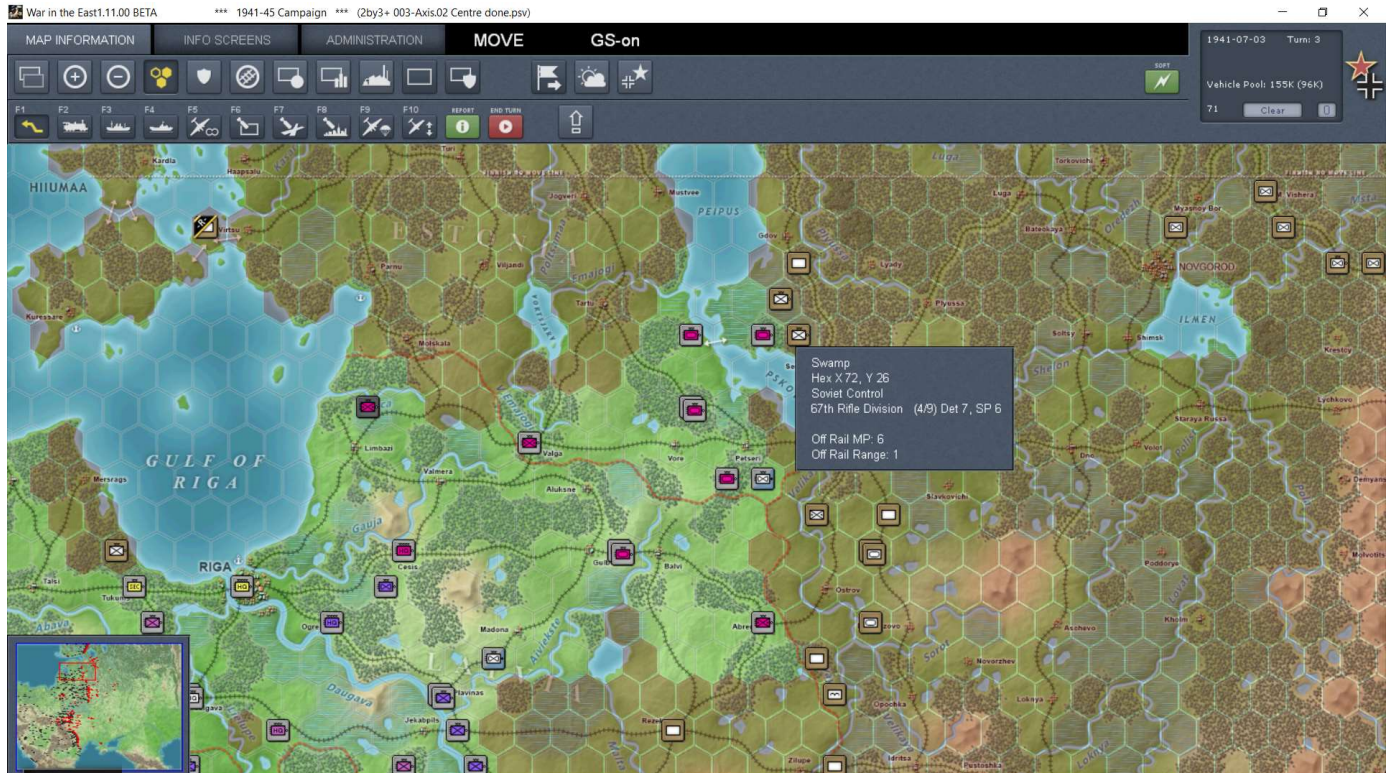


Plan:

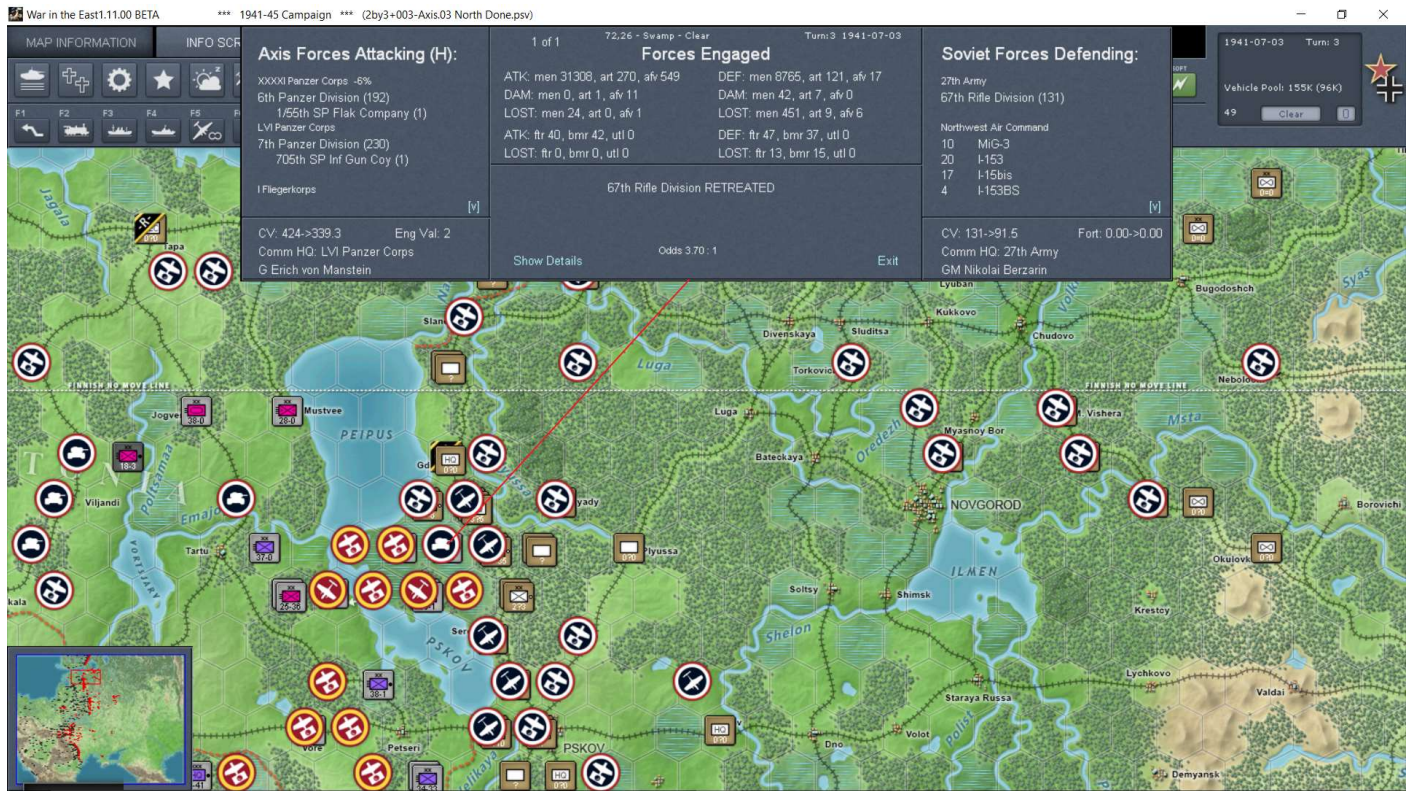
As per AAR Turn 2 projected, the plan is to turn Northward with 18th Army. Before recon missions here are the Soviet positions. One little snag in the plan is that AGC used the AI to conduct missions, which used up my long-range ability to strike airfields in my sector.

We will recon out the Soviets . XXXXI will HQBU this turn and thus I will need to move LVI units into the bridgehead. The rest of the infantry move into their assigned sectors for a Turn 4 all out offensive with XXXXI PzXXX.



Execution

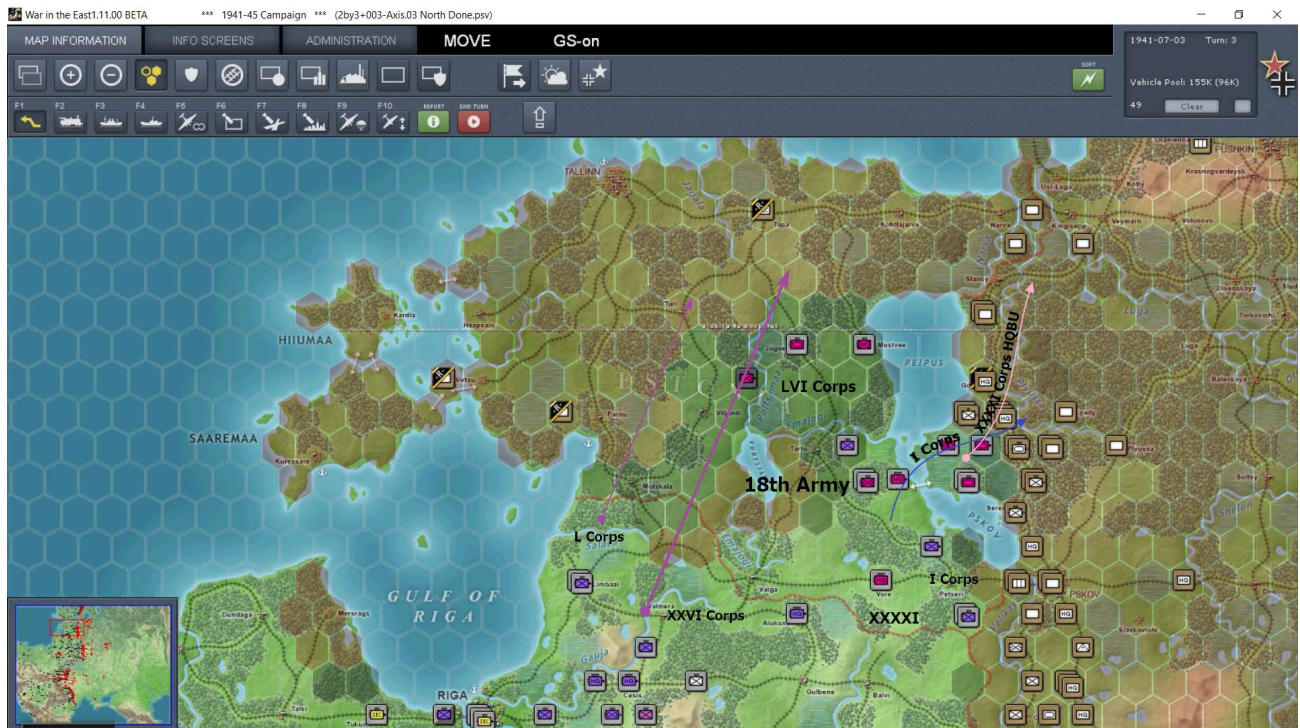
Lots of lessons this turn. One, RR units cannot repair more than 6 hexes from the railhead. A little delay there. I recon and then ground bomb to raise detection levels before attacking and clearing out the swamp hexes at the bridgehead..



Success! Only light woods terrain ahead for turn 4.

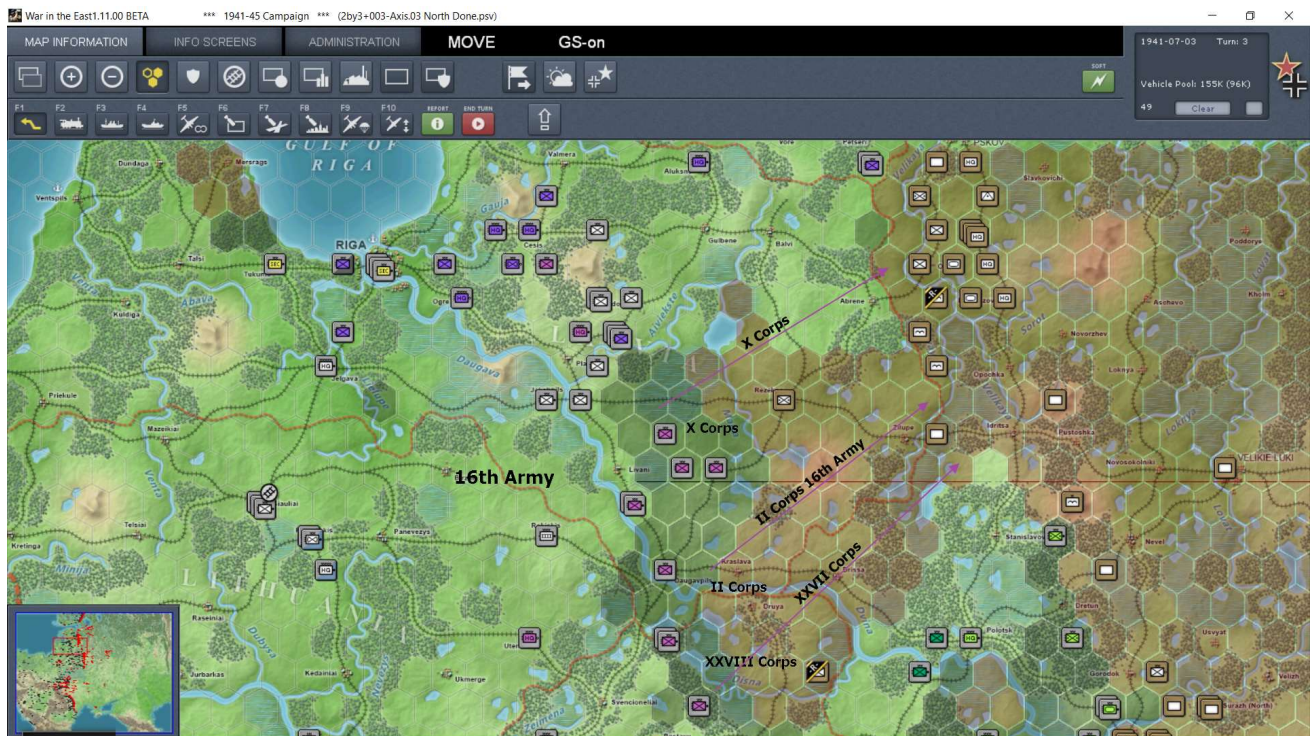
Projected Plan:

The plan for 18th Army is for 2 Corps (XXVI and L Corps) to move Northward. LVI Corps will stage for a HQBU. I Corps and XXXXI pzXXX will break open the bridgehead and put pressure on the Eastern side of the Narva river.



The 16th Army continues to move toward Pskov with the plan to demonstrate a capable force pinning the Soviets to protect Pskov from a westerly attack. This is combined with a complete breakthrough at

the bridgehead. After turn 4 Pskov will be indefensible and will either retreat or be isolated and crushed. The thought is to maneuver around these strong defenses rather than run head long into a wall.



Summary

In summary, the plan is falling into place. Many mistakes due to ignorance have prevented a full exploitation of the current situation; however, I believe Leningrad will fall.